

Dado Dave 20 is a sleek, architectural profile designed to provide high-output up lighting. The LED strip is positioned to maximise asymmetric distribution which offers smooth light out into the space. The concealed light source keeps glare to a minimum, while up to 2650lm per metre LED strip means it packs a punch. The extrusion is designed for super-quick screw-fixing, while a clip-in aluminium lid covers the screw heads and provides a smooth, easy-to-clean surface. For applications where Dado Dave 20 is being mounted flush with the bottom of a bulkhead, then the mounting adaptor can be used to reverse the direction of the mounting screw.

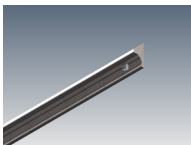
MOUNTING OPTIONS		DIFFUSER OPTIONS		SUPER SERIES LED STRIP OPTIONS		
Surface mounted	Opal			Lumens per metre	Watts per metre	Colour temp.
	Clear			Lumens per metre	Watts per metre	Colour temp.
				310lm		2700K
				330lm	3W	3000K
				345lm		4000K
				760lm		2700K
				800lm	7W	3000K
				840lm		4000K
				1520lm		2700K
				1600lm	14W	3000K
				1680lm		4000K
				1955lm		2700K
				2060lm	20W	3000K
				2160lm		4000K
				2400lm		2700K
				2530lm	26W	3000K
				2650lm		4000K

- LED strip options vary depending on region – please consult your local distributor for more information. Other LED strip options are available on request, including RGB & RGBW.
- All lumen values refer to the bare LED strip. Losses through diffuser/profile are not represented. Consult photometric data.
- 5 year manufacturer's warranty on Super Series & Spec Series LED strip.

ACCESSORIES



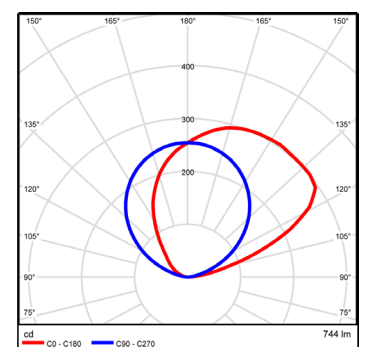
JN-LOC
Joiner locator



MA-4M
Bulkhead mounting adaptor

ADDITIONAL INFORMATION

Applications	Concealed indirect lighting for living rooms, board rooms, hallways.
Installation	Interior only.
Materials	Extruded aluminium body, polycarbonate diffuser, aluminium end caps.
Finish	Natural silver anodised or custom powder coat.
Light source	LED ribbon strip.
Power supply	24V DC - remote driver options ranging from 6W up to 320W.
Dimmable	Various options available, please enquire.



Polar curve for 1890 lumen LED strip with clear diffuser.

