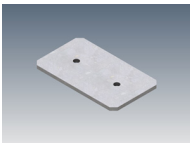


Downhill Dan 35 is a quick-to-install, recessed down-lighter profile. The asymmetric mounting bracket makes this product unique and means that it can be installed with the LED strip already attached. Downhill Dan 35 has plenty of power for a huge range of applications. Silver anodised or white powder coat are standard finish options.

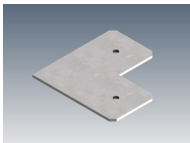
MOUNTING OPTIONS			DIFFUSER OPTIONS			SUPER SERIES LED STRIP OPTIONS		
Recessed			Satin			Lumens per metre	Watts per metre	Colour temp.
						310lm		2700K
						330lm	3W	3000K
						345lm		4000K
						760lm		2700K
						800lm	7W	3000K
						840lm		4000K
						1520lm		2700K
						1600lm	14W	3000K
						1680lm		4000K
						Lumens per metre	Watts per metre	Colour temp.
						1955lm		2700K
						2060lm	20W	3000K
						2160lm		4000K
						2400lm		2700K
						2530lm	26W	3000K
						2650lm		4000K

- LED strip options vary depending on region – please consult your local distributor for more information. Other LED strip options are available on request, including IP54 and IP67.  
- All lumen values refer to the bare LED strip. Losses through diffuser/profile are not represented. Consult photometric data.  
- 5 year manufacturer's warranty on Super Series & Spec Series LED strip.

## ACCESSORIES



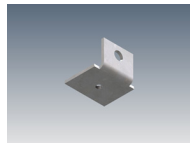
JN-ST-23  
Straight joiner



JN-90-23  
90 degree joiner



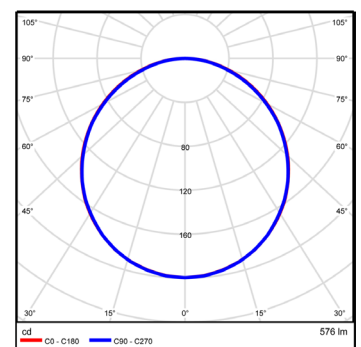
MB-DD35  
Mounting bracket



SMRB  
Seismic restraint bracket

## ADDITIONAL INFORMATION

Applications	General downlighting in kitchens, living rooms, dining rooms, reception counters, lobbies.
Installation	Interior or exterior (with IP67 rated LED strip).
Materials	Extruded aluminium body, PMMA diffuser, aluminium end caps.
Finish	Natural silver anodised, Mannex White powder coat or custom powder coat colours.
Light source	LED ribbon strip.
Power supply	24V DC - remote driver options ranging from 6W up to 320W.
Dimmable	Various options available, please enquire.



Polar curve for 2250 lumen LED strip with satin diffuser.

